



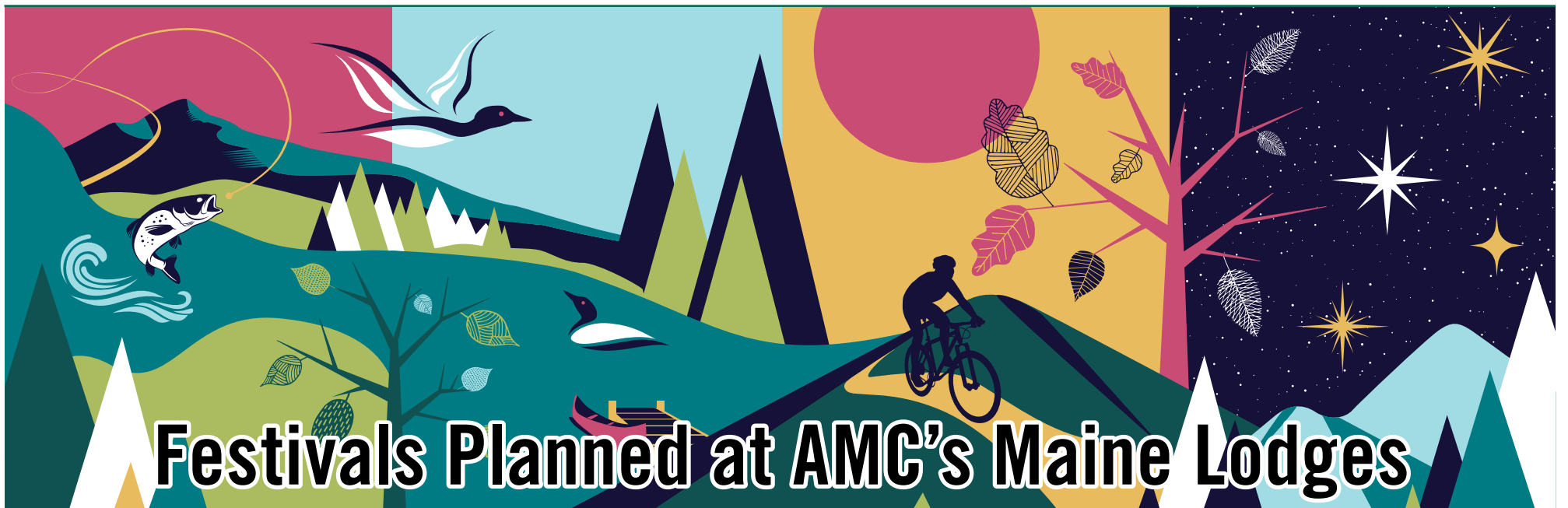
# MAINE

Maine Chapter  
Appalachian Mountain Club  
10 City Square  
Boston, MA 02129

NON-PROFIT  
U.S. POSTAGE  
PAID  
PORTLAND, ME  
PERMIT NO. 454

## WILDERNESS MATTERS

VOLUME XLVIII • NUMBER 2 • SPRING 2023



### Festivals Planned at AMC's Maine Lodges

The Appalachian Mountain Club has scheduled four themed festivals at its Greenville area lodges over the next several months. Guests who secure lodging during these events will be treated to the following unique opportunities:

- May 25-29: Little Lyford Fly Fishing Festival at Little Lyford Lodge
- June 15-18: Maine Woods Birding Festival at Little Lyford Lodge
- July 9-16: Slapjack Biking Festival at Medawisla Lodge
- October 15-22: See The Dark Festival at Medawisla Lodge

All programming is free of charge to overnight guests, made possible through a generous donation from Lenny and Marjorie Johnson. Regular lodging fees apply. To reserve your stay, visit [www.outdoors.org/destinations/maine](http://www.outdoors.org/destinations/maine). Dinner and evening presentations during festivals at Medawisla Lodge are open to visitors staying locally by calling the lodge and securing dinner reservations.

#### Little Lyford Fly Fishing Festival May 25-29 • Little Lyford Lodge

Join us for fly fishing, presentations, music, science, art, and more. AMC's Maine Woods boasts some of the most active native brook trout and Atlantic salmon habitats in the northeast. We'll learn about the fish that populate these waters and the conservation efforts to protect and preserve them. Registered Maine Guides Eric Ward, Megan Hess, and Matt LaRoche will take guests fishing, teach about flies, and lead fly-tying activities. Several experts will be on hand to share information about the health of Maine's fish and their habitats, including Dr. Sarah Nelson, AMC's Research Director; Steve Tatko, AMC's Vice President of Conservation; and Jeff Bagley, Maine's Department of Inland Fisheries and Wildlife's local Fish Biologist. Local musician Alexandra Conover and her husband, Kermit, will be featured during the event. Traditional Maine fishing-camp food will be served throughout the long weekend.

- continued on page 3

### Greetings Trail Enthusiasts,

It's that time of year again! As the weather starts to warm up, the Trails Committee is excited to announce another season of trail work. We're passionate about being out in the woods, and we can't wait to share this experience with others. This year we will be working on trails in some of our favorite places, including Pleasant Mountain, Cutler Mountain, and a section of the Appalachian Trail. We're also thrilled to support the Great Pond Mountain Conservation Trust with some much-needed trail work.

For those new to the Maine lodges, the Maine Chapter sponsors trail work trips with reduced room and board pricing of just \$133 (plus tax) for the long weekend. It's a fantastic opportunity to get involved and have some fun.

We're excited to share our list of planned trail work trips with you:

- April 15: Pleasant Mountain
- April 22: Earth Day - Bucksport area
- May 6: Appalachian Trail in Stratton, Maine
- May 26-29: Little Lyford Lodge
- June 3: National Trails Day - Pleasant & Cutler Mountains
- June 23-26: Gorman Chairback and Medawisla Lodges
- July TBD: Northern Forest Canoe Trail
- August 12-13: Young Members work with Pro Crew at Henderson Brook (near Gorman)
- August 25: Cutler Mountain Painting Party
- October 6-9: Medawisla Lodge
- October 20: Cutler Mountain
- October 21: Pleasant Mountain

#### 2023 Season Trail Work Cutler Mountain



Join our volunteer crews as we maintain the trail system at Cutler Mountain in Hiram, Maine. Cutler is a small mountain with "big mountain" trail maintenance needs. These trips are open to anyone with an interest in helping maintain trails.

- November 4: Annual Fall Trail Maintenance on a section of the AT in Carrabassett Valley

We are constantly searching for trail leaders as there is abundant trail work to be done throughout this vast state. If you want to take on a leadership role, please email me at [trails@amcmaine.org](mailto:trails@amcmaine.org). We are eager to embark on this season's trail work with you! And for those unable to join us, we encourage you to support your local land trust in your area as they, too, require your assistance.

Regards,

Phil Coyne, Volunteer Trails Committee Chair

[trails@amcmaine.org](mailto:trails@amcmaine.org)

# Wilderness Matters

is the newsletter of the Maine Chapter of the Appalachian Mountain Club. Opinions expressed herein do not necessarily reflect the policies or views of the AMC or its Maine Chapter. Not responsible for errors or omissions, except to acknowledge them in a subsequent issue.  
Copyright 2023 - Maine Chapter of the Appalachian Mountain Club.

**Address corrections:** Send to AMC Member Services, 10 City Square, Boston, MA 02129 | (617) 523-0655 | [amcmembership@outdoors.org](mailto:amcmembership@outdoors.org)

**Newsletter submissions and photographs:** Send to Sarah Hunter, Editor, at [newsletter@amcmaine.org](mailto:newsletter@amcmaine.org).

**Deadlines for submissions to Wilderness Matters are:**  
**December 1 | March 1 | June 1 | September 1**

**Submission info:** Wilderness Matters is your Chapter newsletter. Everyone is welcome and encouraged to contribute. We want to hear from you! Please email submissions to [newsletter@amcmaine.org](mailto:newsletter@amcmaine.org). **Submission guidelines:** Articles, opinions, and stories should be limited to 400–500 words. Images should include a photo title, caption, and any other identifying information, including proper photo credit. Thank you!

## Maine Chapter Executive Committee

Chapter Chair: Bill Brooke, [chair@amcmaine.org](mailto:chair@amcmaine.org) (207) 549-5100

Chapter Vice-Chair: Malcolm Persen, [vicechair@amcmaine.org](mailto:vicechair@amcmaine.org)

Secretary: Available

Treasurer: Available

Past Chapter Chair: Cindy Caverly, [pastchair@amcmaine.org](mailto:pastchair@amcmaine.org),

Conservation Chair: Landon Fake, [conservation@amcmaine.org](mailto:conservation@amcmaine.org)

Leadership Development: Tom O'Brien, [MEadvocate@int.org](mailto:MEadvocate@int.org)

Programs Chair: Denise Anderson, [programs@amcmaine.org](mailto:programs@amcmaine.org)

Membership Chair: Available

Maine Woods Initiative: Karen Brace, [mwi@amcmaine.org](mailto:mwi@amcmaine.org)

Newsletter Editor: Sarah Hunter, [newsletter@amcmaine.org](mailto:newsletter@amcmaine.org)

Nominating Chair: Paul Hahn, [nominating@amcmaine.org](mailto:nominating@amcmaine.org), (207) 222-2837

Outings Chair: Jeanine Libby, [outings@amcmaine.org](mailto:outings@amcmaine.org)

Trails Chair: Phil Coyne, [trails@amcmaine.org](mailto:trails@amcmaine.org)

Communications: Available

Young Members Chair: Bobby Jones, [youngmembers@amcmaine.org](mailto:youngmembers@amcmaine.org)

Family Committee Chair: Carolyn Arcand, [families@amcmaine.org](mailto:families@amcmaine.org).

## Other Contacts

Maine Conservation Policy Director:

Eliza Townsend, [etownsend@outdoors.org](mailto:etownsend@outdoors.org), (207) 699-9815

Regional Director: Beth Zimmer, [rd@amcmaine.org](mailto:rd@amcmaine.org)

### Maine Woods Initiative Office

166 Moosehead Lake Road, Greenville, ME 04441  
(207) 695-3085

### AMC Headquarters

10 City Square, Boston, MA 02129 (617) 523-0655

## The Conservation Committee Welcomes a New Chair

We are excited to introduce Landon Fake, the new chair of the Conservation Committee. Landon is the executive director of the Great Pond Mountain Conservation Trust (GPMCT), a 5,000-acre preserve in Bucksport and Orland. Before that, he worked in the field and as an administrator for Outward Bound and ran the Camden Snow Bowl ski area.

In his conservation work, Landon is especially interested in how habitat, forestry, and cultural issues intersect with recreation. That intersection will be the center of his work on the committee this year as he shares conservation information and promotes stewardship with trip leaders and membership.

Landon plans to become a trip leader and participate in trail work with Phil Coyne in the GPMCT Wildlands in Orland this spring.

## Message from the Chair

The Maine Chapter Executive Committee has been busy this winter planning for the upcoming year. A few highlights include:

- A new Family Committee which will offer family-oriented outings beginning this spring.
- The return of in-person programming at the Brunswick Library.
- Expanded leadership training in April.
- Many more trail work opportunities, as well as scholarships for our weekend work trips.

We've welcomed three new committee chairs:

- Bobby Jones, Young Members' Chair
- Landon Fake, Conservation Chair
- Carolyn Arcand, Family Committee Chair

Open positions on the Executive Committee include:

- Treasurer
- Secretary
- Membership
- Communications

If you have experience in finance, organization, or communication, we would like to hear from you. Please reach out to Paul, our Nominating Committee Chair ([nominating@amcmaine.org](mailto:nominating@amcmaine.org)) or see the postings on our website (<https://amcmaine.org/volunteer/>) for more information.

In addition to these openings, I want to remind everyone of the many opportunities to volunteer with the Maine Chapter. Whether you want to help maintain trails, lead a hike, or serve on a committee, there is something for everyone. Volunteering is a great way to meet new people, learn new skills, and make a positive difference in our community.

Finally, we are considering alternatives to our annual fall meeting, which has most recently been a dinner and presentation at Pineland Farms. We are considering a new venue and/or format. If you would like to share your ideas, please contact me.

Thank you for your continued support of the AMC Maine Chapter. I look forward to working with you all in the coming year.

Bill Brooke, [chair@amcmaine.org](mailto:chair@amcmaine.org)

Find us on 

[www.facebook.com/MaineAMC/](https://www.facebook.com/MaineAMC/)

## Welcome Young Members' Chair Bobby Jones

Please join us in welcoming Bobby Jones, our new Young Members' Chair. Bobby has worked as a backpacking and hiking guide and is excited to bring his experience to the AMC Maine Chapter. Young Members can look forward to the return of some fan favorites, including the "Hikes and Hops" series (starting with an April trip to Camden Hills State Park and Sea Dog Brewing) and a camping trip in the White Mountains with the New Hampshire 20s and 30s Chapter. Bobby also plans to revive the Baxter State Park weekend in October, just in time for peak foliage.

One of the most exciting developments this year is an inter-chapter Young Members' trail work trip planned for August 11-13. This will be an excellent opportunity to hang out with some amazing folks at one of the AMC Maine lodges while also giving back and learning more about what goes into keeping trails in shape. Stay tuned for updates!

Check the [amcmaine.org](https://amcmaine.org) calendar regularly for updates and postings and contact Bobby at [youngmembers@amcmaine.com](mailto:youngmembers@amcmaine.com) if you have any questions or would like to be added to the Young Members' mailing list for important announcements and updates on trip postings.

# AMC Maine Policy Updates

By Eliza Townsend, Maine Conservation Policy Director

The 131<sup>st</sup> Maine legislature is under way, addressing a number of issues of interest to AMC and our members, some familiar, some new. As we make decisions about where to apply our time and expertise, we are focused on three critically important issues: climate change, biodiversity loss, and the need to ensure everyone has access to the outdoors.

The central issue sure to dominate the session through June is the development of the state budget for the next two years. AMC and partners are advocating for investments in the state agencies that steward our land, water, and air—the Departments of Agriculture, Conservation and Forestry; Environmental Protection; Inland Fisheries and Wildlife; and Marine Resources. Critical related programs reside within the Governor’s Office of Policy and Innovation, the Governor’s Energy Office, Efficiency Maine, and the Maine Office of Outdoor Recreation.

These agencies have long carried out their legislative charge while facing the challenges of inadequate funding and staffing. AMC and the organizations we work with often hear from these agencies about their struggles to attract and retain qualified staff. This slows their ability to fight climate change and biodiversity loss and protect our natural resources through land conservation, review of development applications, addressing threats to the forest, or enforcing current environmental laws. Our outdoor recreation experiences are affected by lack of staffing. For example, the state parks are now welcoming about 1 million more people than 15 years ago, with the same number of staff. That’s a recipe for trouble. That’s why AMC supports efforts to fully invest in our natural resources and the agencies that steward them through the state budget.

Other bills we support have not yet been printed or scheduled for a public hearing. They include:

- An Act to Authorize a General Fund Bond Issue to Promote the Design, Development and Maintenance of Trails for Outdoor Recreation and Active Transportation (LD 1156; Sponsor Representative Jessica Fay): Interest in outdoor recreation skyrocketed in the wake of the pandemic, and our trails are showing the wear and tear. Further, nearby trails improve our quality of life, instill a love of the outdoors, and improve our health. Studies show they increase property values. This bill would provide \$30 million to repair and maintain trails and to build new ones, including trails accessible to all.
- An Act to Facilitate Stakeholder Input Regarding Forest Policy in Maine (LD 993; Sponsor Representative Maggie O’Neil): This bill would create a 21-member Forest Advisory Board to air the issues facing Maine’s 17.5 million acres of forest and make recommendations to the Maine Forest Service. Our forest is vitally important for jobs, wildlife habitat, and carbon sequestration. We need all stakeholders at the table to keep it healthy, intact, and absorbing carbon pollution well into the future.

- An Act Implementing the Recommendations of the Task Force on Changes to the Maine Indian Claims Settlement Implementing Act (Sponsor Representative Rachel Talbot Ross): In 2020, a bipartisan task force released a report containing 22 consensus recommendations aimed at affirming the self-determination of the Passamaquoddy Tribe, Penobscot Nation, and the Houlton Band of Maliseets. This bill would establish that these tribes have the same “rights, privileges, powers, duties and immunities” as all 570 other federally recognized tribes in the United States. The Wabanaki make clear that their identity and culture is inseparable from the lands and waters that have sustained them for 10,000 years. We are confident that they can steward those resources as well as the State of Maine has.
- An Act to Conserve Endangered and Threatened Species Habitat (LD 1246; Sponsor Representative Lori Gramlich): This bill would expand the circumstances in which the Department of Environmental Protection consults with the Department of Inland Fisheries and Wildlife on strategies to avoid and minimize impacts to endangered and threatened species habitat.
- An Act Regarding Environmental Justice in Maine (Sponsor Representative Rachel Talbot Ross): In Maine, as elsewhere, climate change and environmental concerns pose the biggest threat to communities that are already marginalized, overburdened, or underserved. This bill would adopt definitions and practices to ensure that these communities can participate in the development of policies that affect them, and that state agencies implement and enforce policies that benefit everyone.

Just about one-third of legislators are serving for the first time, producing significant turnover in committee membership, including both the Appropriations and Financial Affairs Committee and Agriculture, Conservation and Forestry Committee, where the issues we follow are often discussed.

Now is the perfect time to introduce yourself to your state representative and state senator, and to let them know the issues on your mind. You can find them at:

- [legislature.maine.gov/house/house/MemberProfiles/ListAlphaTown](https://legislature.maine.gov/house/house/MemberProfiles/ListAlphaTown)
- [legislature.maine.gov/senate/find-your-state-senator/9392](https://legislature.maine.gov/senate/find-your-state-senator/9392)

Join AMC’s Conservation Action Network to receive updates and take action on key issues: [www.outdoors.org/conservation/how-you-can-help/](https://www.outdoors.org/conservation/how-you-can-help/)



## Festivals *continued from page 1*

### **Maine Woods Birding Festival June 15-18 • Little Lyford Lodge**

The inaugural Maine Woods Birding Festival is scheduled during active birding time and will provide an opportunity for guests to learn about birds and their habitats. Guided tours and bird-themed food, music, and literature will be offered throughout the weekend. Special guests include Sally Stockwell, Director of Conservation for Maine Audubon, Pete McKinley, Ecologist and Principal Investigator at the Wilderness Society, and Master Maine Naturalists.

### **Slapjack Bike Festival July 9-16 • Medawisla Lodge**

We will be joined by a variety of biking-focused organizations, including the Bicycle Coalition of Maine. Plenty of time will be set aside for exploring the beautiful dirt roads that wind through the North Maine Woods. Live music from Ben Cosgrove and Griffin Sherry, free swag, fun clinics, equipment demos, and evening presentations will all be part of the week. Dinner and evening presentation tickets will be available for those staying locally. This region has over 300 miles of gravel roads that can be enjoyed as a day trip based out of nearby communities or an AMC Lodge, a multi-day lodge-to-lodge adventure, or an overnight

bikepacking trip utilizing the many campsites available in the area. Mountain bikes, fat-tire, and gravel bikes are all appropriate for these roads. Skinny-tired road bikes are not recommended since none of the roads are paved.

### **2<sup>nd</sup> Annual See the Dark Festival October 15-22 • Medawisla Lodge**

Back by popular demand, the See the Dark Festival will provide the opportunity for guests to learn about dark sky conservation and strengthen their knowledge around ways we can all make an impact. The dark sky is an important ecological resource and a thrilling outdoor experience. AMC’s Maine Woods International Dark Sky Park is one of the best places for stargazing in the region. The week is scheduled around the new moon for optimal stargazing. Attendees will enjoy star-themed dinners and desserts and expert presentations from astronomers, scientists, poets, musicians, and artists. Special guests include astronomer John Meader of the Northern Stars Planetarium, musician and composer Ben Cosgrove, and artist Meredith Broberg. Dinner and evening presentation tickets will be available for those staying locally.

# SPRING CALENDAR: OUTINGS | EVENTS | MEETINGS

These listings—presented in date order by category—include only those posted prior to the submission deadline for this issue of Wilderness Matters. For the most complete and accurate information and up-to-date listings—and so you don't miss spontaneous outings—please periodically check the calendar at [www.amcmaine.org/calendar](http://www.amcmaine.org/calendar).

For general questions or comments regarding these calendar listings, please contact the Outings Chair at [outings@amcmaine.org](mailto:outings@amcmaine.org).

Please be courteous when contacting trip leaders by doing so before 9:00 pm unless otherwise specified. Thanks!

## HIKES

**May 21: Mt. Garfield Spring Hike.** Grafton County, NH. <http://www.amcmaine.org/calendar/#143059>. Mt. Garfield is a 10-mile round trip hike with 3,500 feet of elevation gain and stunning 360-degree views at the summit of this 4,501-ft mountain. Participants should have recent experience hiking with similar mileage and elevation gain. Pace is expected to average 1.5 miles per hour. The leader will contact you to ask about your readiness for the hike. Difficulty: Moderate.

Leader: Denise Fredette, [deniserae77@gmail.com](mailto:deniserae77@gmail.com)

**June 9-12: Explore Camden Hills State Park.** Camden, ME <http://www.amcmaine.org/calendar/#142817>. Three days of hiking in the mid-coast area! Hikes will be moderate to strenuous. Accommodations are located at a rustic, hike-in lodge. Participants will carry in group gear as well as overnight supplies. Day hikes will begin and end at the lodge.

Leader: Emily Davis, 207-542-2824, [emilyjfdavis@gmail.com](mailto:emilyjfdavis@gmail.com)

## INSTRUCTION

**April 21-23: Maine Chapter In-person Outdoor Leadership Training.**

Mahoosuc Guide Service, Newry, ME. <http://www.amcmaine.org/calendar/#142743>. This training will help develop leadership skills through instruction and role-play scenarios. The course will cover the recommended elements of Leadership Training as outlined in the organizational Leadership Requirements and Guidelines (LRG's) developed by AMC. It's a prerequisite to becoming a trip leader and is tailored to the types of trips future leaders plan to organize. Registration Fee: \$50 per person to cover accommodations, food, and training costs. Leader: Thomas O'Brien, 203-927-6312, [tlobrien@sbcglobal.net](mailto:tlobrien@sbcglobal.net)

## MEETINGS AND PRESENTATIONS

**April 4: Beer Hiking New England – a discussion with Carey Kish.**

Curtis Memorial Library in Brunswick, Maine. <https://amcmaine.org/calendar/#trip-id-143434>. Please join us on April 4th, 7:00 – 8:00 pm, for this in-person program at the Curtis Memorial Library. Well-known author and AMC member Carey Kish will discuss his latest book, *Beer Hiking New England* (2023). Carey is the editor of *Appalachian Mountain Club Maine Mountain Guide* and author of *AMC's Best Day Hikes along the Maine Coast*. He is a hiker extraordinaire, having thru-hiked the Appalachian Trail (twice), the Pacific Coast Trail, and the Florida Trail. In *Beer Hiking New England*, he continues to share his abundant knowledge of hiking, plus the addition of enjoying a craft beer after each hike. We will not enjoy a beer together at the Curtis Memorial library but will leave knowing where to find a brewery after a day hike in New England. This talk will also be broadcast live over zoom for those who cannot attend in person. Registration is required for the zoom broadcast only.

Leader: Denise Anderson

## TRAIL WORK

The Maine Chapter will supply tools for the trail work trips, but if you have your own, please bring your own. Please wear appropriate clothing (long pants/long sleeve shirt, boots, hat), sunscreen and bug spray, and bring your own work gloves, water, and lunch/snacks.

**April 15: Trail Work at Pleasant Mountain.** Bridgton, Maine. <http://www.amcmaine.org/calendar/#143125>. Join the Maine Chapter as we support Loon Echo Land Trust with some spring cleanup trail work on

Pleasant Mountain. We will hike approximately 3.5 - 4 miles round trip, working along the way. The elevation gain is 1,600 feet. No experience is necessary; volunteers will be trained on the job. The trip will begin mid-morning and will end mid-afternoon. Type of work: easy maintenance, trimming vegetation, cleaning water bars, removing rocks and branches, etc. Registration for this trip closes Tuesday, April 10, 2023.

Leader: Phil Coyne, [trails@amcmaine.org](mailto:trails@amcmaine.org)

**April 22: Earth Day: Basic Trail Care Skill-Building - Bucksport Area Trail Days.** Great Pond Land Trust, Orland, ME. Come celebrate Earth Day! Under the guidance of a trained AMC volunteer trail crew leader, learn basic trail care such as pruning, raking, removing invasive species, and working with trail surface materials. Come for the whole day or select one of the shorter options:

- 8:30 to 2:00 pm: <http://www.amcmaine.org/calendar/#143267>
- 8:30 to 10:30 am: <http://www.amcmaine.org/calendar/#143268>
- 11:00 to 1:00 pm: <http://www.amcmaine.org/calendar/#143269>

All participants must register in advance. Registration closes April 17, 2023.

**May 6: Annual Spring Trail Maintenance on the Appalachian Trail.**

Stratton, Maine. <http://www.amcmaine.org/calendar/#143141>. This is a moderate, 6.4-mile round trip hike, which we will take at a working pace. Type of work: clearing blowdowns, cleaning water bars, and other basic maintenance. We will meet in the morning and will work for about 6 hours. Registration for this trip closes May 3, 2023. Leader: Josh Barlow, 207-873-4205 before 9pm, [joshcbarlow@gmail.com](mailto:joshcbarlow@gmail.com); Leader: Katherine Barlow, 207-228-4991 before 9pm, [kbug9000@gmail.com](mailto:kbug9000@gmail.com)

**May 26-29: Memorial Day Weekend Trip Trail Maintenance at Little Lyford Lodge.** Greenville, ME. <http://www.amcmaine.org/calendar/#143261>. Join us for a weekend of trail work in Maine's beautiful 100-mile wilderness.

Work includes removing blowdowns, pruning brush, clearing drainages, and other tasks to improve the trails. Efforts will range in difficulty from easy to moderate. Tools will be provided. If you have a favorite set of loppers or other tools, bring them along. Prepare to spend most of the days in the woods with appropriate clothing (long pants/long sleeve shirt, boots, hat, gloves) and personal items (water bottles, sunscreen, bug spray, etc.). Bag lunches are provided. We will stay in the bunkhouse. Pre-registration is required. To register for the trip, follow these two steps:

1. Register for the trip and receive the group registration number.
2. Use the group registration number to reserve your lodging by calling the AMC Contact Service Center. (603-466-2727).

Registration for this trip closes Sunday, May 22, 2023, or when the trip capacity is reached. Cost is \$133.00 + tax = approx. \$145.00. Leader: Robert Pantel, 207-841-3469 from 6:30 to 9:00 p.m., [robert.pantel@gmail.com](mailto:robert.pantel@gmail.com)

**June 3: National Trails Day Pleasant Mountain.** Bridgton, Maine. <http://www.amcmaine.org/calendar/#143121>. Join the Maine Chapter as we celebrate National Trails Day - a day for local trail advocacy and support - at Loon Echo Land Trust. We will hike approximately 3.5 - 4 miles round trip, working along the way. The elevation gain is 1,600 feet. No experience is necessary; volunteers will be trained on the job. The trip will leave mid-morning and will end mid-afternoon. Type of work: easy maintenance, trimming vegetation, cleaning water bars, removing rocks and branches, etc. Registration for this trip ends May 29, 2023.

Leader: Phil Coyne, [trails@amcmaine.org](mailto:trails@amcmaine.org)

**June 3: National Trails Day Cutler Mountain.** Hiram, Maine.

<http://www.amcmaine.org/calendar/#143118>. Join the Maine Chapter as we celebrate National Trails Day - a day for local trail advocacy and support - at Cutler Mountain. We will hike approximately 3.5 miles round trip while working along the way. No experience is necessary; volunteers will be trained. Type of work: easy maintenance, trimming vegetation,



## Trail Work Scholarship Opportunities

If you've never tried working on trails before, you're invited to apply for a Chapter-sponsored trip to the Maine Woods. This scholarship program is named after long-time trail work volunteer and leader, Peter Roderick. The scholarship will cover all costs for overnight lodging and food for the weekend during one of four trail work opportunities in AMC's Maine AMC lodges. Visit <https://amcmaine.org/2023-trails-scholarship/> for more information, or contact Phil Coyne at [trails@amcmaine.org](mailto:trails@amcmaine.org).

cleaning water bars, removing rocks and branches, etc. Registration for this trip closes Wednesday, May 31, 2023. Leader: Patsy Leavitt, [patsyleavitt55@gmail.com](mailto:patsyleavitt55@gmail.com)

**June 23-26: Trail Work at Gorman Chairback Lodge.** Greenville, ME. <http://www.amcmaine.org/calendar/#143173>. Join us for a weekend of trail work in Maine's beautiful 100-mile wilderness. The work will include removing blowdowns, pruning brush, clearing drainages, and other tasks to improve the trails. If schedules allow, the group may work with the AMC pro trail crew and participate in more advanced trail building skills. Efforts will range in difficulty from easy to moderate. Tools will be provided. If you have a favorite set of loppers or other tools, bring them along. Prepare to spend most of the days in the woods with appropriate clothing (long pants/long sleeve shirt, boots, hat, gloves) and personal items (water bottles, sunscreen, bug spray, etc.) Bag lunches are provided. To register for the trip, follow these two steps:

1. Register for the trip online and receive the group registration number.
2. Use the group registration number to reserve your lodging by calling the AMC Contact Service Center. (603-466-2727).

Registration for this trip closes Sunday, June 16, 2023, or when capacity is reached. Leader: David McCarthy, 207-363-2791 before 9:00 pm, [drmccarthy@aol.com](mailto:drmccarthy@aol.com)

**June 23-26: Trail Work at Medawisla Lodge.** Greenville, ME. <http://www.amcmaine.org/calendar/#143126>. Join us for a weekend of trail work in Maine's beautiful 100-mile wilderness. We'll remove blowdowns, prune brush, and clear drainages while enjoying the scenery and great food at Medawisla Lodge. Contact the leader for full details. To register for the trip, follow these two steps:

1. Register for the trip and receive the group registration number.
2. Use the group registration number to reserve your lodging by calling the AMC Contact Service Center. (603-466-2727).

Registration for this trip closes Sunday, June 18, 2023, or when trip capacity is reached. Leader: Phil Coyne, [trails@amcmaine.org](mailto:trails@amcmaine.org)

## New Family Outings Committee

As we move towards spring and summer, AMC Maine's new Family Outings Committee will be planning a variety of outings and social events for families with children of all ages. Our trips will be designed with families in mind and will emphasize enjoyment and appreciation of the outdoors when venturing out with children. Family Outings Chair Carolyn Arcand is seeking volunteer committee members to help plan family-oriented hikes, bike rides, paddles, and other events. If you have ideas you'd like to share, or would like to join the committee, please contact Carolyn at [families@amcmaine.org](mailto:families@amcmaine.org).

## Become an AMC Trip Leader!

Become a Volunteer AMC Maine Chapter Leader for one or more of these activities:



You can start the process of becoming a leader anytime of the year and you choose how little or how much you want to do. The AMC provides leadership training and Wilderness First Aid Certification to active leaders. Find out how you can get involved!

Contact us at: [outings@amcmaine.org](mailto:outings@amcmaine.org) for more info!



**October 6-9: Trail and Boundary Work at Medawisla Lodge.** Greenville, ME. <http://www.amcmaine.org/calendar/#143140>. With hundreds of miles of property lines and trails, the AMC in Maine has lots of volunteer work opportunities. For this trip we will be staying in the bunkhouses at Medawisla Lodge and Cabins. There will be the usual variety of jobs to choose from including trail work, boundary work, and work around the lodge and cabins. Come join the fun during peak foliage season. To register for the trip, follow these two steps:

1. Register for the trip and receive the group registration number.
2. Use the group registration number to reserve your lodging by calling the AMC Contact Service Center. (603-466-2727).

Registration for this trip closes September 9, 2023, or when trip capacity is reached. Leader: Josh Barlow, 207-873-4205 before 9pm, [joshcbarlow@gmail.com](mailto:joshcbarlow@gmail.com); Leader: Katherine Barlow, [kbug9000@gmail.com](mailto:kbug9000@gmail.com)

**October 21: Trail Maintenance at Pleasant Mountain.** Bridgton, Maine. <http://www.amcmaine.org/calendar/#143120>. Join the Maine Chapter as we support Loon Echo Land Trust and prepare the trail for winter. The trip will begin mid-morning and will end mid-afternoon. Type of work: easy maintenance, trimming vegetation, cleaning water bars, removing rocks, etc. Registration for this trip closes Tuesday, October 17, 2023. Leader: Phil Coyne, [trails@amcmaine.org](mailto:trails@amcmaine.org)

**November 4: Annual Fall Trail Maintenance on Appalachian Trail.** Stratton, Maine. <http://www.amcmaine.org/calendar/#143143>. This is a moderate, 6.4-mile round trip hike, which we will take at a working pace. Type of work: clearing blowdowns, cleaning water bars and other basic maintenance. Please bring your own work gloves, water, and lunch. Be sure to wear orange – it will be hunting season. The trip will meet in the morning and will work for about 6 hours. Registration for this trip closes November 11, 2023. Leader: Josh Barlow, 207-873-4205 before 9pm, [joshcbarlow@gmail.com](mailto:joshcbarlow@gmail.com); Leader: Katherine Barlow, 207-228-4991 before 9pm, [kbug9000@gmail.com](mailto:kbug9000@gmail.com)

## Volunteer Opportunities

### Your Maine Chapter Needs You!

The Maine Chapter can only be successful through the volunteer efforts of its membership. At this time, we have a number of openings in the Executive Committee. They include:

**Secretary, Treasurer, Communications Committee Chair, and Membership Chair.**

All of these positions operate with assistance of the Executive Committee. Information about each role can be found on our website [www.amcmaine.org](http://www.amcmaine.org). Please consider taking that first step to express an interest or ask a question about one of the positions. Inquiries can be addressed to Paul Hahn, Chair of the Nomination Committee at [nominating@amcmaine.org](mailto:nominating@amcmaine.org). Thank you for your consideration.



## Bald Pate Mountain Winter Hike for Newbies and 55+ a big hit!

A lively group of hikers enjoyed a stellar blue bird day on Bald Pate Mountain in Bridgton, Maine. Hikers learned how to adapt to changing conditions on a winter hike. It was winter hiking at its finest and a great opportunity to connect with new people, get some exercise, and socialize along the way!

Hike leaders: Patsy Leavitt, Michelle Moody

# Outdoor Leadership Training

By Tom O'Brien

The Maine Chapter will host in-person Outdoor Leadership Training April 21-23, 2023, at Mahoosuc Guide Service in Newry, Maine. To register, visit the calendar page on [www.amcmaine.org](http://www.amcmaine.org).

The training will help develop leadership skills through instruction and role-play scenarios. The course will cover the recommended elements of Leadership Training as outlined in the organizational Leadership Requirements and Guidelines (LRG's) developed by AMC. It's a prerequisite to becoming a trip leader and is tailored to the types of trips future leaders plan to organize.

One section will be for those interested in becoming Maine Chapter Front Country Leaders, leading short day hikes, urban walks, etc., within a minimum of one hour from emergency services. This training will take place from Friday evening through dinner on Saturday.

The other section will be for those interested in becoming Maine Chapter Backcountry Leaders, leading more strenuous backcountry trips, backpacking trips, extended biking trips, longer paddling trips, etc. This training will take place from Friday evening through Sunday late afternoon.

All participants will be asked to choose their accommodations: a bunk in the bunkrooms (bring your sleeping bag or sheets and blanket), or bring your tent and sleep outdoors.

The Chapter will provide food for the weekend and will ask participants to help us prepare meals.

Please contact the Maine Chapter Leadership Development Committee Chair ([leadership@amcmaine.org](mailto:leadership@amcmaine.org)) if you have any questions concerning how this training will fit into your path to becoming an AMC Trip Leader.

Registration Fee: \$50 per person to cover accommodations, food, and training costs.

# The Maine Owl Pellet Project Wants You!

A Community Science Opportunity

The Maine Owl Pellet is a collaboration between the University of New England, the Maine Department of Inland Fisheries and Wildlife, and the United States Fish and Wildlife Service that aims to engage the public and promote crowdsourced science to understand better the diet of Maine's owls and the distribution and composition of the small mammal community on which they prey, including the threatened northern bog lemming.

Owls eat a variety of animals and then regurgitate course matter (like hair, bones, and feathers) in the form of pellets. These pellets can be found on the ground, often near an owl roost. The Maine Owl Pellet Project is collecting owl pellets around the state to learn more about 1) the diet of owls and 2) to discover new locations where the rare northern bog lemming is found in Maine.

If you would like to help in this effort, visit <https://sites.une.edu/maine-owl-pellet-project/> to learn how to collect and submit a pellet if you find one.

Together, we can discover more about the fascinating world of owls, their prey, and the ecosystems they call home. Please reach out to us at [owlpellets@une.edu](mailto:owlpellets@une.edu) with questions.



## Welcome New Trip Leaders

Be sure to check the calendar listings on [www.amcmaine.org](http://www.amcmaine.org) for trips led by our newest leaders.



### Tony Anni

Tony splits his spare time as Board Chair of Great Bay Services, a non-profit that helps adults with intellectual/developmental disabilities and autism fulfill their life's dreams and passions - and most recently, the AMC, where he aims to help others enjoy, understand and advocate for the region's mountains, forests, and waters.

He is passionate about organizing hiking and backpacking trips and providing access to those whose lives or challenges don't typically include activities in the wilderness.



### Patsy Leavitt

Patsy is a semi-retired nurse practitioner with a lifelong passion for hiking and the outdoors. In her early teen years, she became a "Junior Naturalist," beginning her commitment to preserving the natural world. During Patsy's working years, hiking, snowshoeing, and camping were her "R&R," and she greatly admired the trail workers she encountered in her travels. When Patsy retired from full-time work in

2019, she became involved in the AMC as a trail worker and eventually as a leader. She has informally adopted Cutler Mountain, in Hiram, Maine, and leads trail work trips there.



### Josh and Katie Barlow

Josh and Katie have been AMC trail work volunteers for four years. They enjoyed attending AMC's Trail College in NH and assisting with last summer's successful Maine Woods Initiative (MWI) welcome event at Little Lyford. Through the great experience of receiving

a Peter Roderick Trail Work Scholarship and becoming regular attendees of the October Medawisla work trip, they caught a passion for the Maine Woods and became leaders themselves in 2022. Following in the shoes of their mentor, Peter Roderick, this year they will lead the October Medawisla Trail Work weekend and the Fall and Spring cleanups for a 3.3-mile section of the Appalachian Trail in Carrabassett Valley. Katie and Josh serve on the MWI committee and look forward to many years of sharing time in the woods with other AMC members!



### Diane Neff

Diane has been an AMC member since 2007. She is a four-season hiker, primarily in New Hampshire and Maine. Diane also enjoys cycling, cross-country skiing, and backpacking. She plans to lead hiking trips in Grafton Notch this summer.

# BEER HIKING NEW ENGLAND

## A fun new guide to 50 great hikes and craft breweries

By Carey Kish



**W**ith thousands of miles of hiking trails and walking paths rich in scenery, history and wildlife, New England is a hiker's dream destination. And for trampers who appreciate beer, the region has the added appeal of being home to a burgeoning craft brewing industry that now includes more than 700 breweries, microbreweries, brewpubs and tasting rooms. Someone should write a book about hiking and beer I'd thought many times over the years. And so finally I did.

*Beer Hiking New England* (2023, Helvitiq, 344 pp., \$24.99) is the tastiest way to discover Maine, New Hampshire, Vermont, Massachusetts, Connecticut and Rhode Island. The full-color guide features 50 great hikes (10 in Maine), each not far from a brewery or brewpub where great craft beer can be enjoyed. The result of several years of research and writing, the new book is now available online, at outdoor retailers, and in bookstores. It was a wonderful journey, and I hope you'll pick up a copy and enjoy the travels as much as I did.

New England has hiking opportunities aplenty to suit every interest and ability, from high mountain peaks and leafy green hills, sparkling lakes and ponds, clear rushing rivers and streams to sandy dunes, beaches and rocky coastal headlands. And somewhere in the vicinity of trail's end, hikers can always find an inviting spot to enjoy a refreshing craft brew—a fun place to relax and reflect, pint in hand, on the day's outdoor activities amid jovial pub banter, while conjuring up plans for the next hike-and-brew endeavor.



The selected hikes selected range far and wide across the extraordinarily diverse natural landscape of New England. Among them you'll find everything from easy pondside strolls to moderate hill walks and forest forays to strenuous mountain climbs. The majority of the hikes are loops, beginning and ending at the same trailhead, while a handful are round-trip (in-and-out via the same trail). A few hikes are one-way or point-to-point, beginning at one trailhead and ending at another.



Take an all-above treeline hike around the summit of Mt. Washington, NH with *Beer Hiking New England*.

The breweries and beer styles to be encountered are as varied as the region's geography. New Englanders love their beer, and several states consistently rank among the highest in the nation for per capita breweries and beer consumption. "We brew the beer we love to drink" is a common refrain among brewers and brewery owners, who exude a palpable enthusiasm for their craft and an amazing passion for their patrons, staff and communities.

From barns and old mill complexes to former machine shops, from main street storefronts to restored train depots, from small rural operations to large urban producers, from budding new businesses to long-established institutions, every New England brewery has its own unique character and flavor. The hazy, juicy, hop-forward New England IPA may be the dominant beer, but beer hikers will discover a wide range of drinkable brews on tap wherever you go—from traditional favorites to experimental batches and seasonal offerings.

The fact is that there's a wealth of really good beer all over New England, from the New England IPA to the more traditional beers—the lagers, IPAs, wheat beers, Belgians, porters and stouts—plus fruit sours and other specialty brews. Most breweries feature a tap list of regularly available beers, while some have a constantly rotating tap list. What you can always count on is variety and that you'll find one or more beers that will delight your olfactory senses and satisfy your taste buds.

New England. Hiking. Beer. *Beer Hiking New England*. Great outdoor and indoor adventures await beer hikers in the pages of this new book. Hike safely, have fun and please drink responsibly. Cheers!

Carey Kish of Mount Desert Island, ME served as editor of *Wilderness Matters* from 2011—2021. He is also editor of the *AMC Maine Mountain Guide* and author of *AMC's Best Day Hikes Along the Maine Coast*. You can follow Carey on Facebook and on Instagram @careykish.



The author hard at work with a refreshing brew in hand, Stoneface Brewing, Newington, NH

Please join the AMC Maine Chapter on April 4th, 7:00 – 8:00 pm, for an in-person program at the Curtis Memorial Library in Brunswick, Maine. Well-known author and AMC member Carey Kish will discuss his latest book, *Beer Hiking New England* (2023). Carey is the editor of *Appalachian Mountain Club Maine*

*Mountain Guide* and author of *AMC's Best Day Hikes along the Maine Coast*. He is a hiker extraordinaire, having thru-hiked the Appalachian Trail (twice), the Pacific Coast Trail, and the Florida Trail. In *Beer Hiking New England*, he continues to share his abundant knowledge of hiking, plus the addition of enjoying a craft beer after each hike. We will not enjoy a beer together at the Curtis Memorial library but will leave knowing where to find a brewery after a day hike in New England.

# Maine Mountain Guide: Recommended Springtime Hikes

By Carey Kish



The big view from alpine-like summit of Little Jackson Mtn. includes the high peaks and cliffs of Tumbledown Mtn.

The *Maine Mountain Guide*, an essential companion for outdoor enthusiasts since 1961, is the only comprehensive hiking guide to the mountain trails of Maine. The 11th edition of the venerable guidebook, released in 2018, describes 625 trails on 300 mountains, from Acadia National Park to Aroostook County and Maine's White Mountains to Washington County, a hiking bounty totaling close to 1,500 miles. Here are a few suggestions for great hikes this spring to help you shake off the long winter blues. Enjoy! (By the way, the next edition of the *Maine Mountain Guide* will contain more mountains, trails and trail miles than ever. Look for it later this summer.)

## **APRIL: Mt. Agamenticus, York (p. 355)**

The Mt. Agamenticus Conservation Region encompasses more than 10,000 acres of coastal woods and hills in southern York County. Make a day of it and explore a good chunk of this wild and wonderful place with a hike not only on Mt. A (aka First Hill and the site of the long defunct Big A ski area, relics of which are still there), but out into the backcountry beyond to Second Hill and Third Hill, all on a well-marked system of footpaths. Start from the Mountain Rd. trailhead and take Ring Trail for starters. *Strenuous, 7.6-mile loop, 1,340 feet elevation gain.*

## **MAY: Sawyer Mtn., Limerick (p. 351)**

Sawyer Mtn. is the central natural feature of the Sawyer Mtn. Highlands, a conservation parcel of 1,472 contiguous acres. Owned and managed by the Francis Small Heritage Trust, this is part of the largest unfragmented block of undeveloped forestland in York and Cumberland counties. From the ME 117 trailhead, hike the rolling Sherwood Libby Trail for 2.3 miles to the summit. En route you'll enjoy a pleasant mix of forest types and lots and lots of old stone walls. Return via Sawyer Mtn. Road Trail. *Moderate, 4.1-mile loop, 830 feet elevation gain.*

## **JUNE: Little Jackson Mtn., TWP 6 North of Weld (p. 215)**

Little Jackson is perhaps the most scenic summit in all of the 22,000-acre Tumbledown Public Lands unit. Combine the Little Jackson Connector and Little Jackson Trail for a terrific 3.7-mile hike to the wide open alpine-like summit of Little Jackson Mtn. (3,470 feet). Enjoy the awesome 360-degree panorama that ranges from the peaks and cliffs of Tumbledown Mtn. to Jackson Mtn. and far beyond. The trailhead for this out-and-back hike is on Byron Rd. *Strenuous, 7.2 miles round-trip, 2,400 feet elevation gain.*



The neighboring peak of Jackson Mtn. looms over the final stretch of the hike to the top of Little Jackson Mtn.



The summit of Sawyer Mtn. was once the site of a whale oil light used to guide ships into Portland Harbor.